

TROUBLESHOOTING

GAS CONTINUOUS FLOW - M SERIES



Contents

-
1. Booster won't turn on or no hot water

 2. Noisy when booster is running

 3. E0 error code, temp sensor disconnection or short circle

 4. E1 error code, Ignition failure

 5. E2 error code, fake flame protection

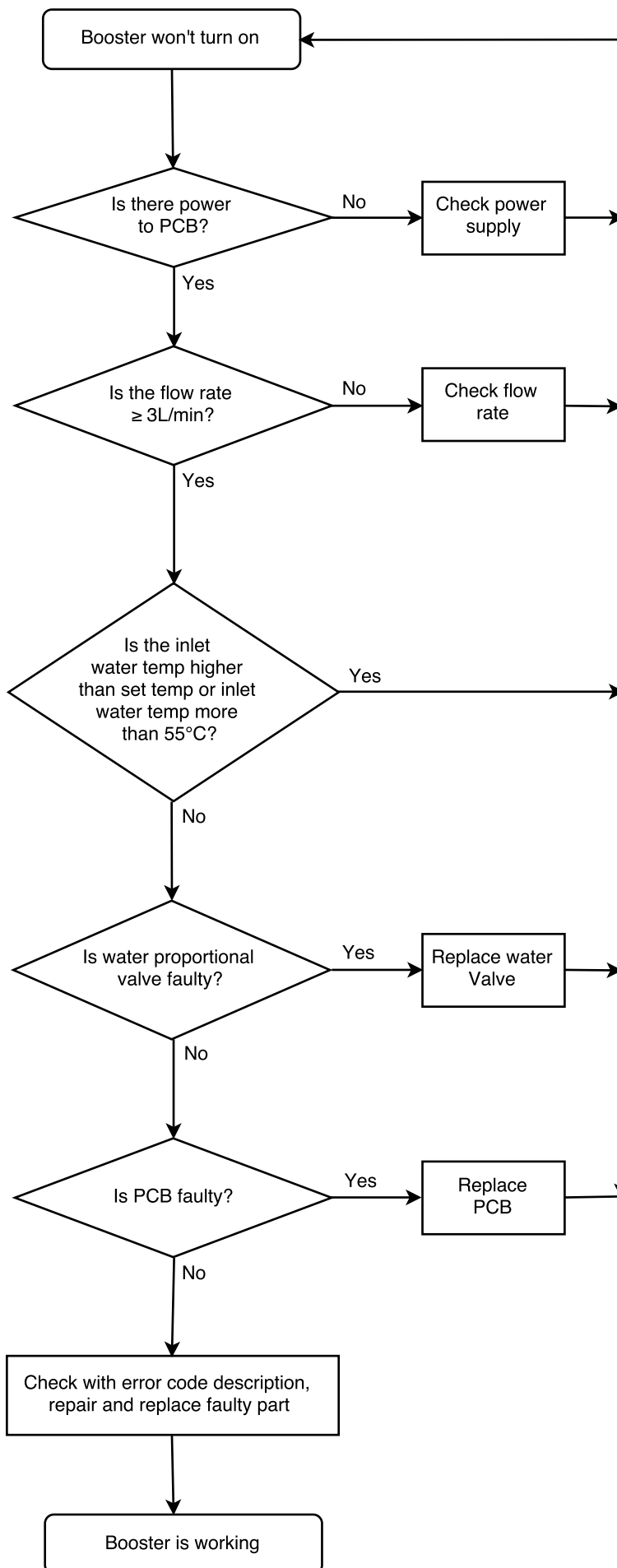
 6. E3 error code, thermostat failure protection

 7. E4 error code, outlet over temperature protection

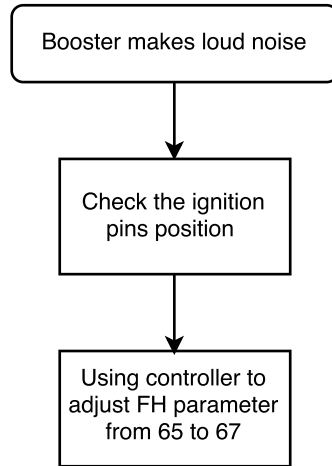
 8. E5 error code, air pressure failure protection

 9. E6 error code, gas valve switch failure protection

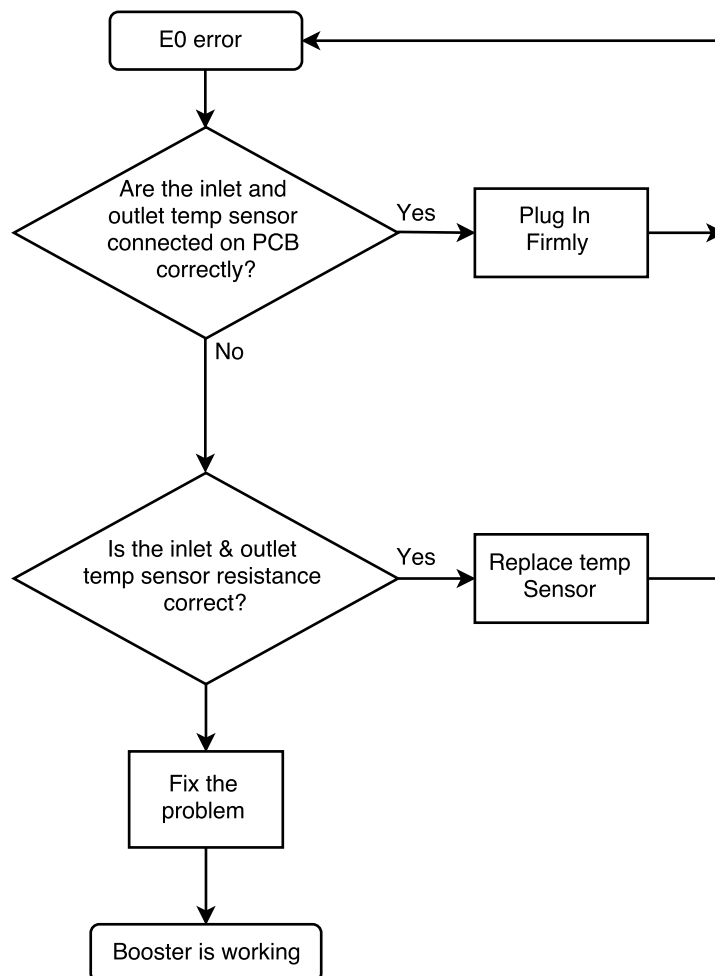
1. Booster won't turn on or no hot water



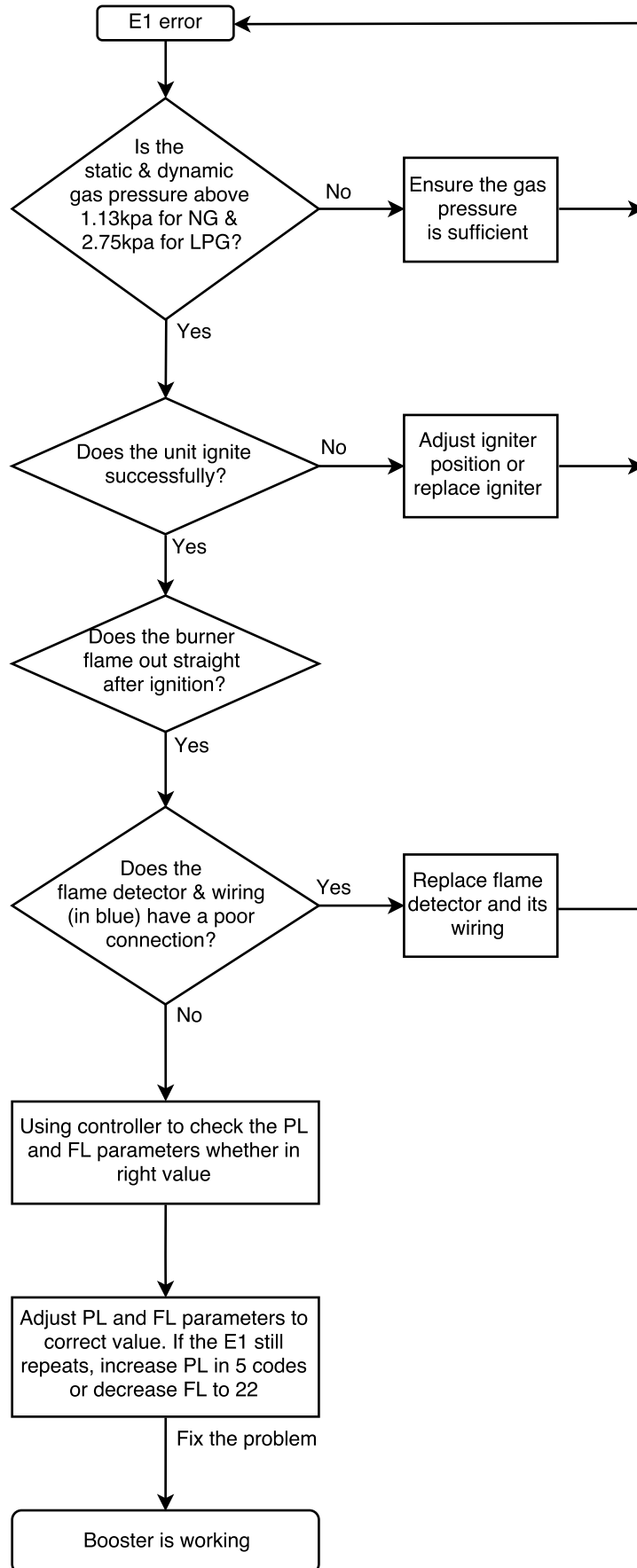
2. Noisy when booster is running



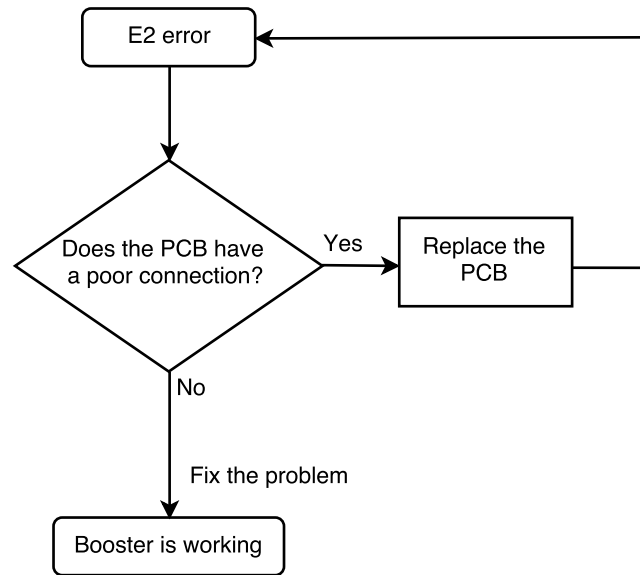
3. E0 error code, temp sensor disconnection or short circle



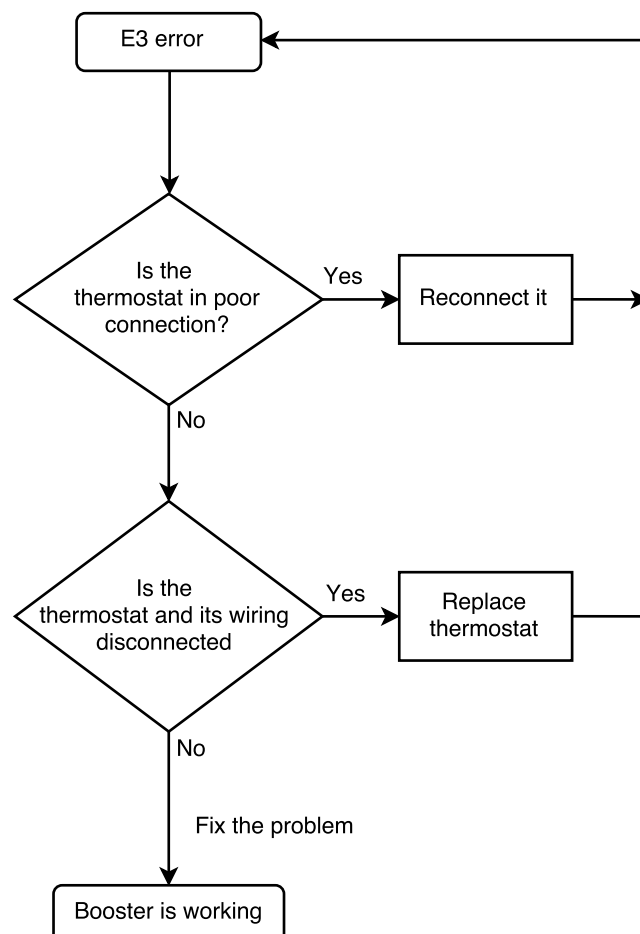
4. E1 error code, Ignition failure



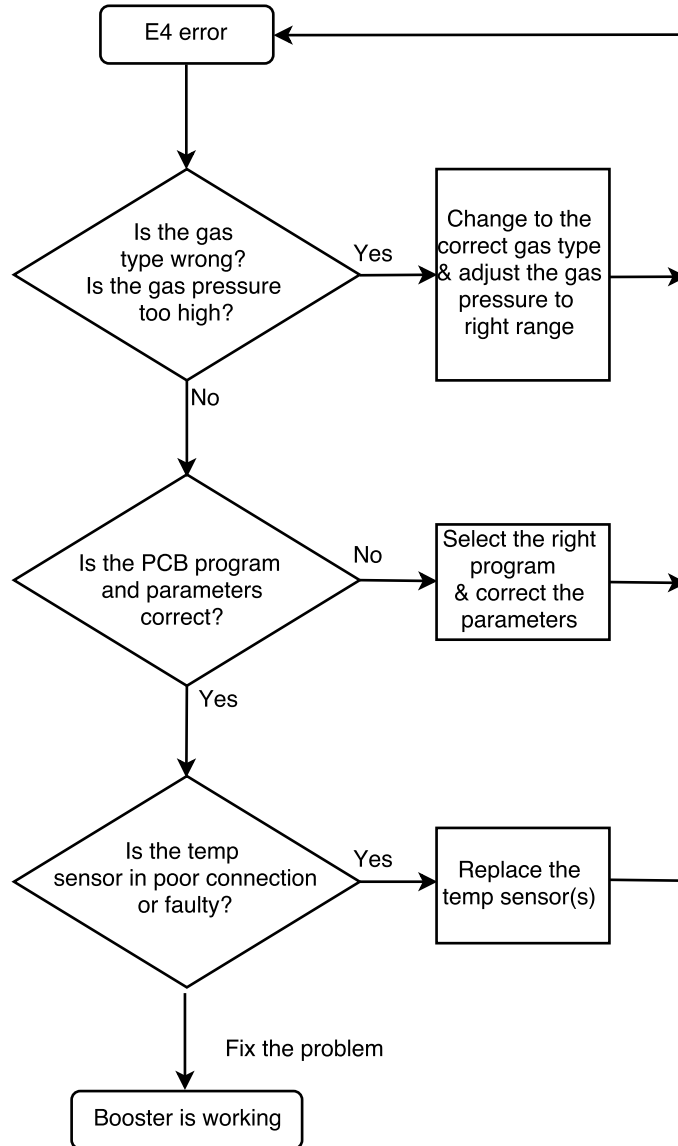
5. E2 error code, fake flame protection



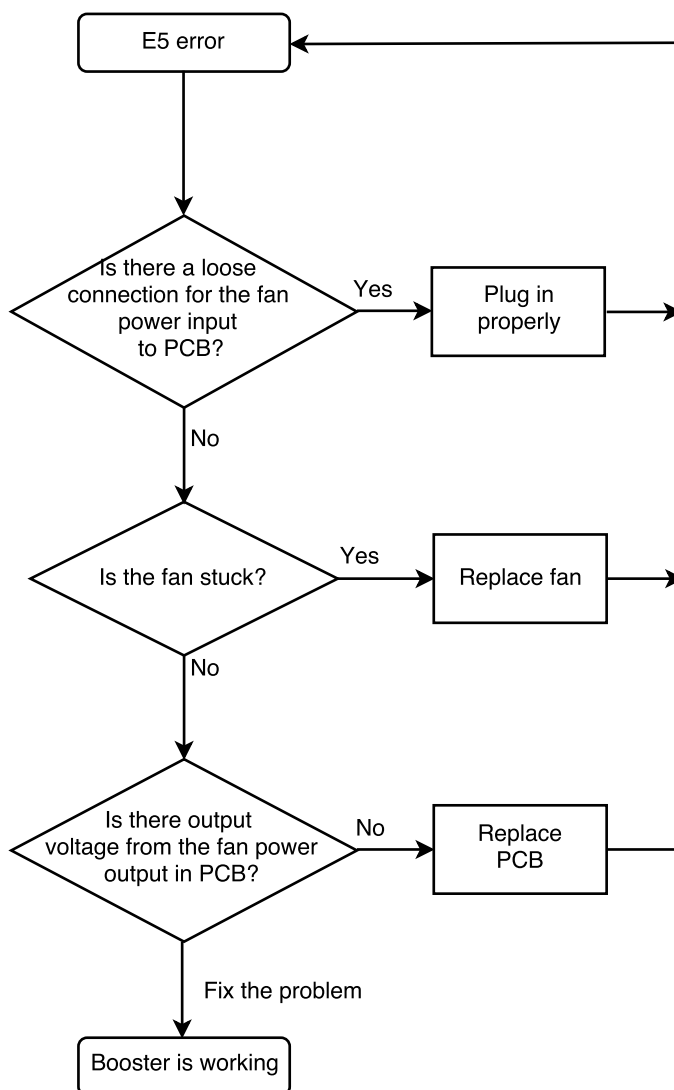
6. E3 error code, thermostat failure protection



7. E4 error code, outlet over temperature protection



8. E5 error code, air pressure failure protection



9. E6 error code, gas valve switch failure protection

