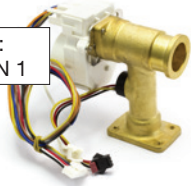


SPARE PARTS

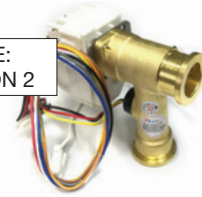
GAS CONTINUOUS FLOW - M26

NOTE:
VERSION 1



Proportional Water Valve (V1)
(Pre March 2018)
Order Code: P6379

NOTE:
VERSION 2



Proportional Water Valve (V2)
(March 2018 Onwards)
Order Code: P63792

NOTE:
VERSION 1



Water Inlet Connector (V1)
(Pre March 2018)
Order Code: P6397

NOTE:
VERSION 2



Water Inlet Connector (V2)
(March 2018 Onwards)
Order Code: P64972



Water Outlet Connector
Order Code: P6398



Water Inlet / Outlet O-Ring
Order Code: P6497



Inlet Temperature Sensor
Order Code: P6403



Outlet Temperature Sensor
Order Code: P6401



Fan Assembly
Order Code: P6487



Printed Circuit Board Assy
Order Code: P6302



Power Cord 240V
Order Code: P6389



Thermal Cut Out Fuse
Order Code: P6485



Gas Inlet Connector
Order Code: P6388



Gas Flow Valve
Order Code: P6396

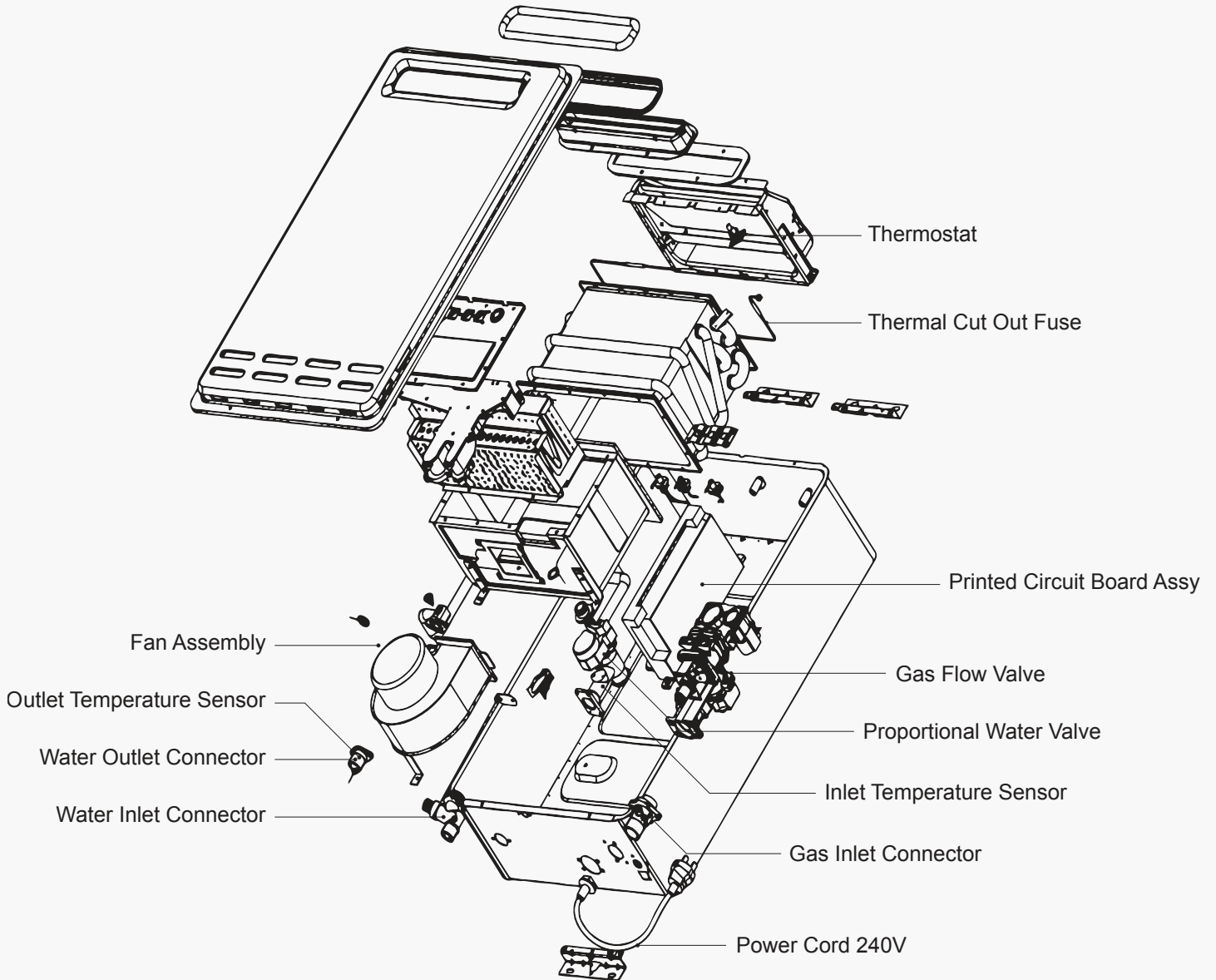


Thermostat
Order Code: P6404



Remote Control
Order Code: P6510

Part Location



HOW TO DETERMINE THE UNITS PRODUCTION DATE

PRODUCTION DATE
YYYYMM



	M26-50 (JSW52-26VH-50)	
	Natural Gas	Propane (LPG)
Input (MJ/h)	200	
Output (kW)	46.4	

PRODUCTION DATE
YMMM



	Distributed by 	M26 (JSW52-26VH)	
		Natural Gas	Propane (LPG)
Input (MJ/h)	200		
Output (kW)	46.4		