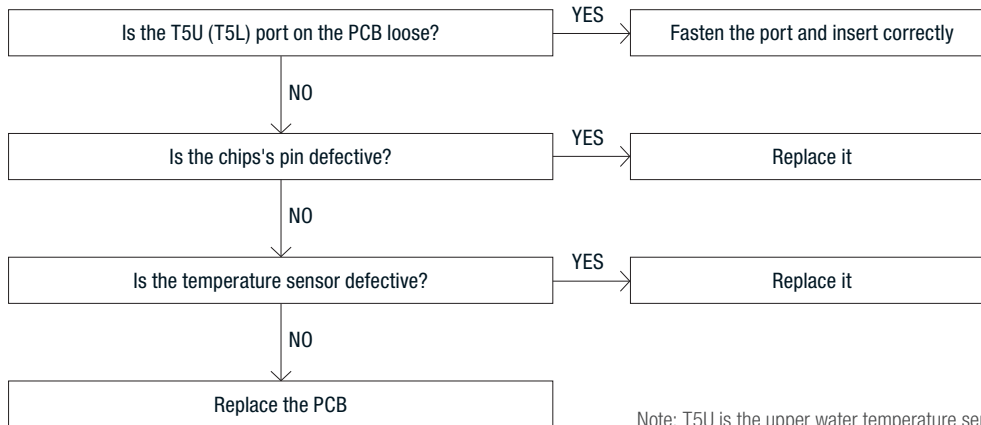


SERVICE TROUBLESHOOTING

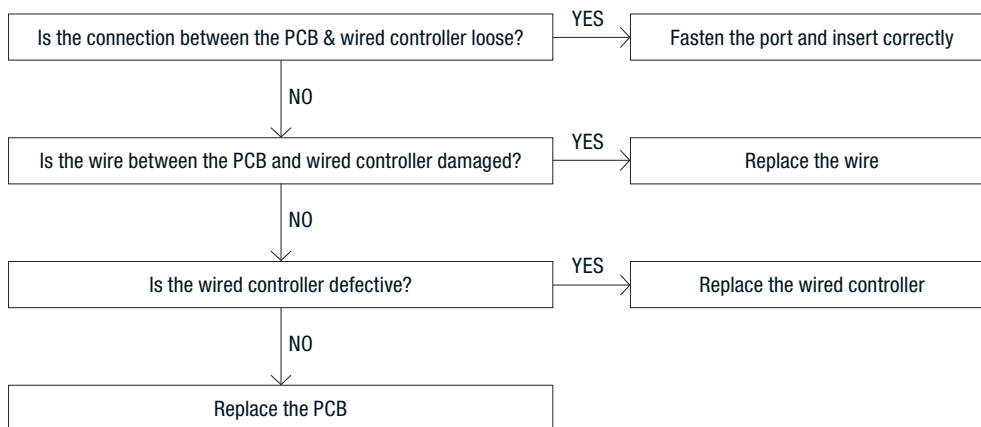
MIDEA HEAT PUMP ERROR CODES

Error E0 / E1 | Error of the T5U / T5L sensor

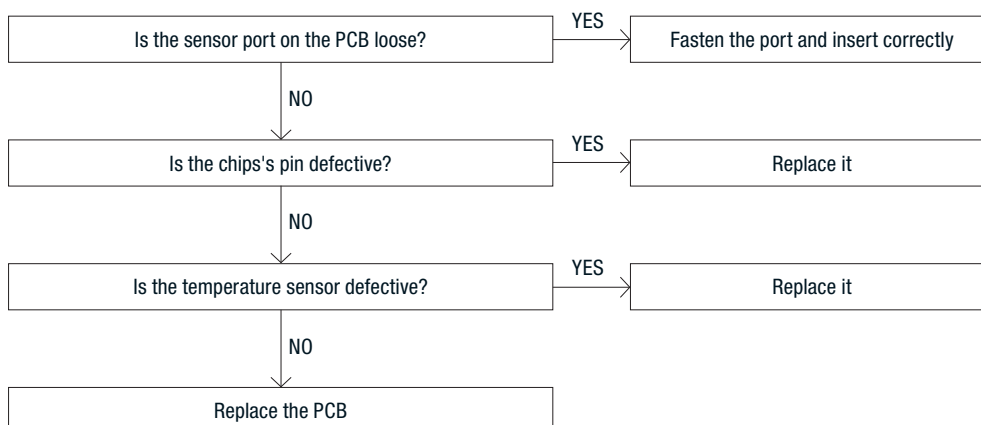


Note: T5U is the upper water temperature sensor / T5L is the lower water temperature sensor.

Error E2 | Tank & wired controller communication error



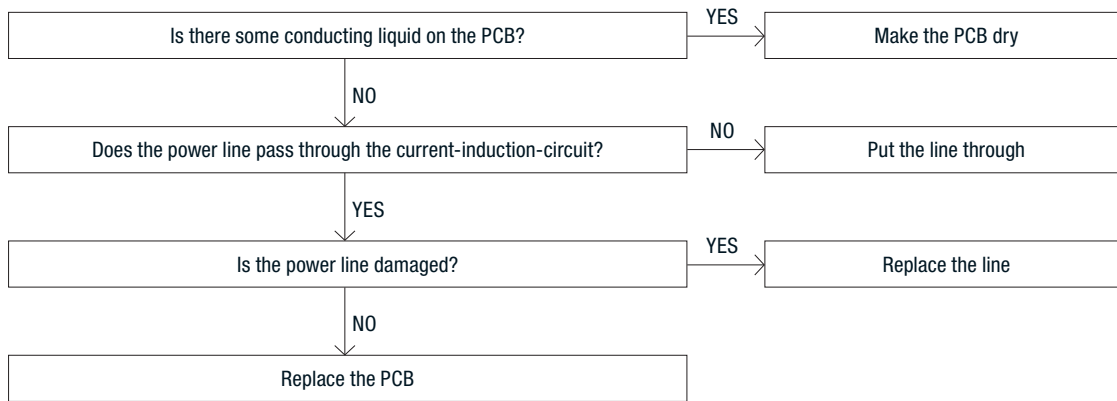
Error E4 / E5 / E6 / E9 | Error with T3 / T4 / TP / TH temperature sensor



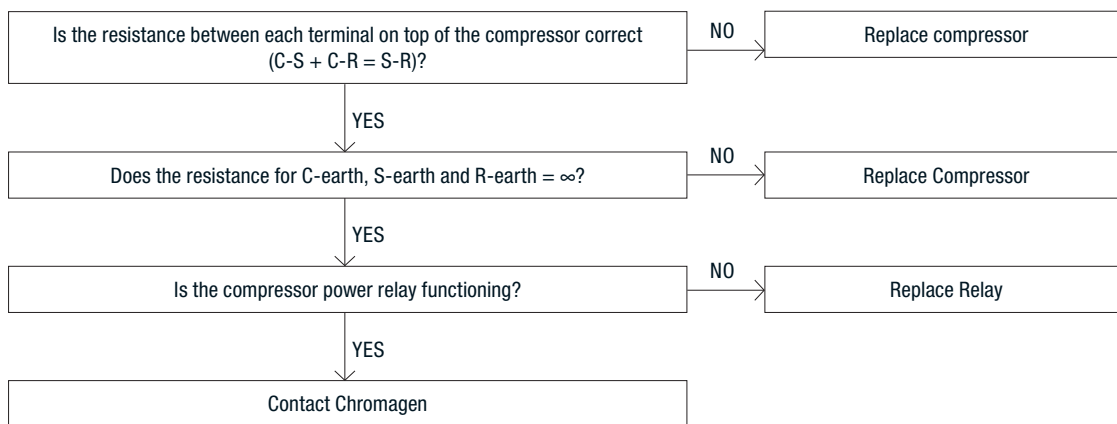
Note: T3 is the evaporator temp sensor.
 T4 is the ambient temp sensor.
 TP is the compressor discharge temp sensor.
 TH is the compressor suction temp sensor.

Error E8 | Electric leakage error

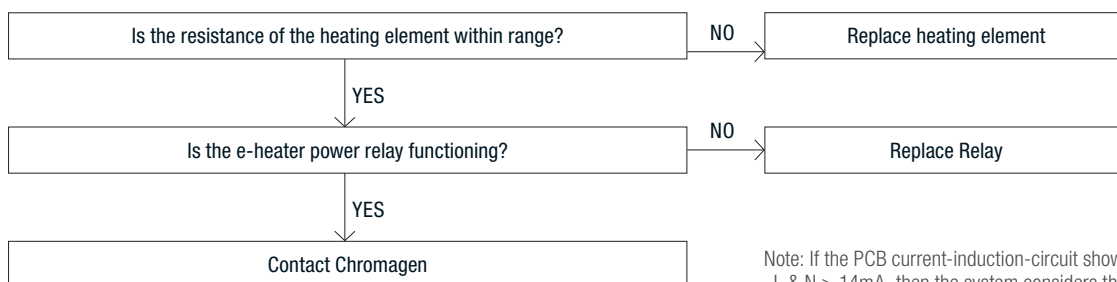
1. Displays on initial start up (after restart)



2. Error displays once compressor starts (after approx 3mins from restart)

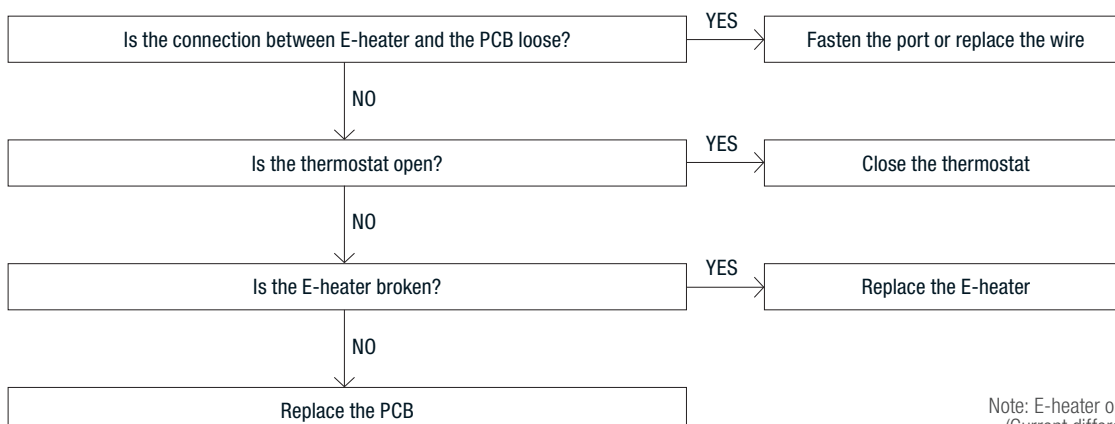


3. Displays once E-heater is activated (manually selected)



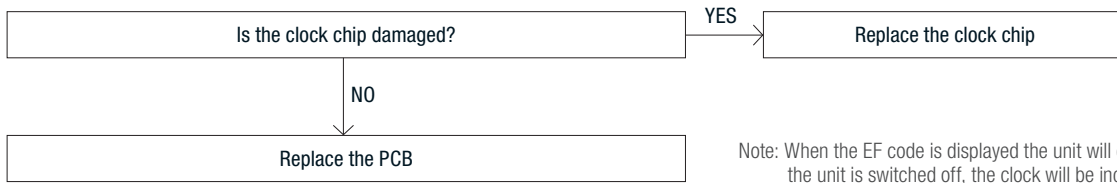
Note: If the PCB current-induction-circuit shows a current difference between L & N > 14mA, then the system considers this as an 'electric leakage error'.

Error EE (HP-280 Only) | E-Heater open circuit error



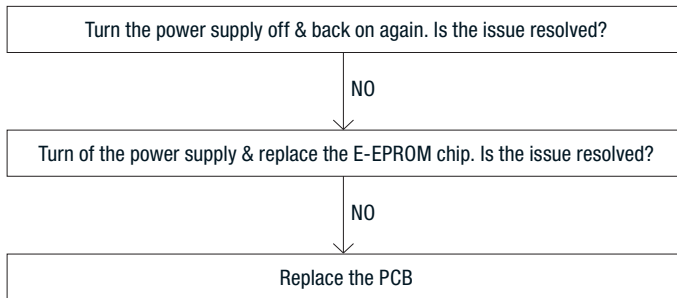
Note: E-heater open circuit error means that IEH (Current difference E-heater on and off) < 1A.

Error EF | Clock chip error

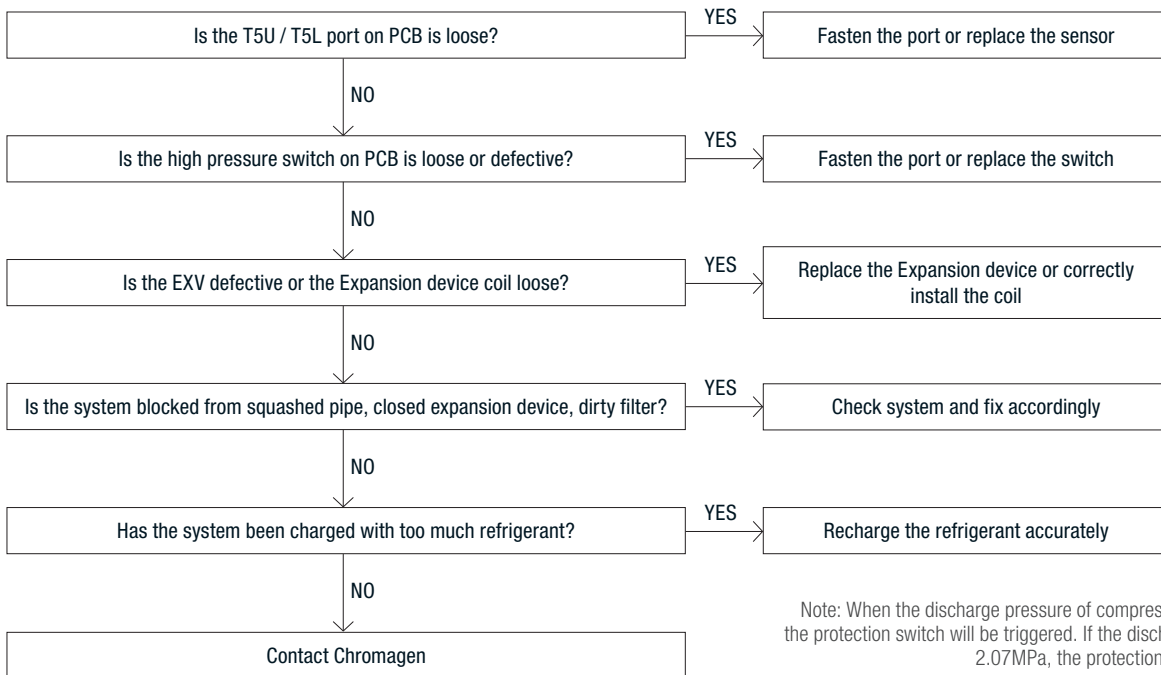


Note: When the EF code is displayed the unit will continue to function, however if the unit is switched off, the clock will be incorrect when switched back on.

Error Ed | E-EPROM chip error

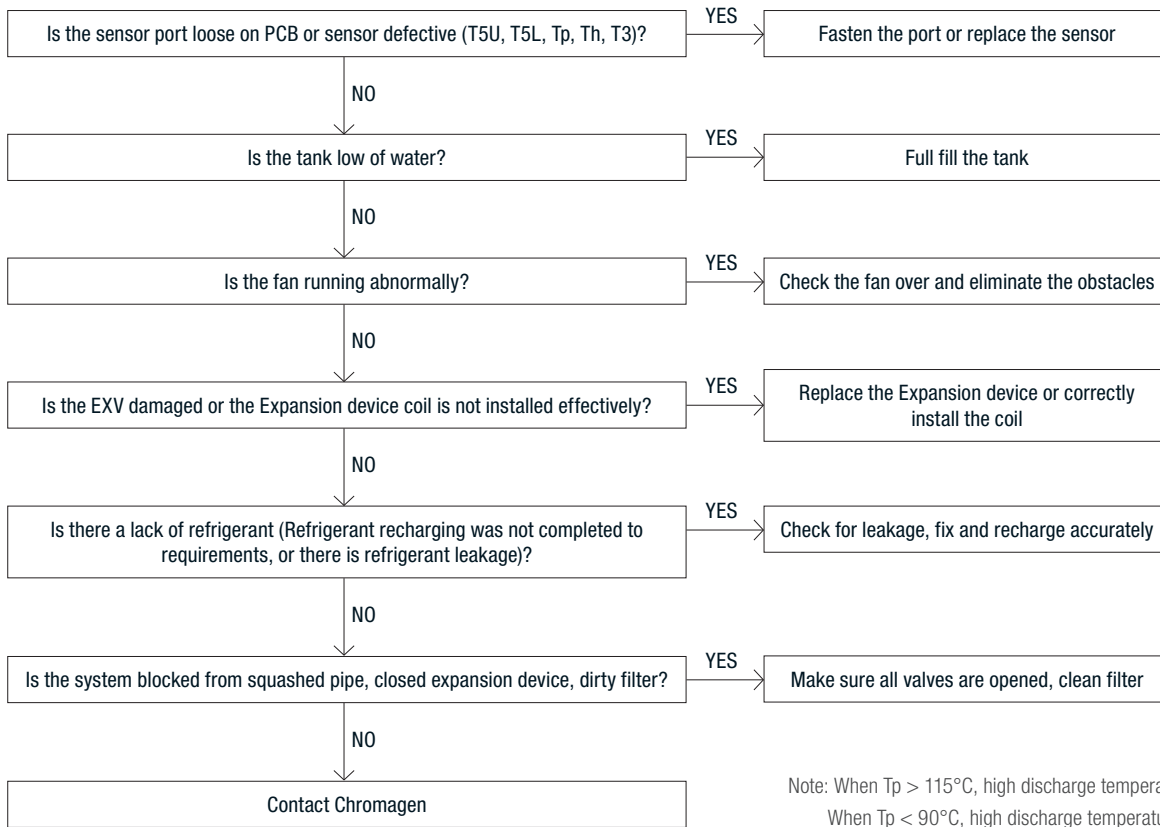


Error P1 | High pressure protection

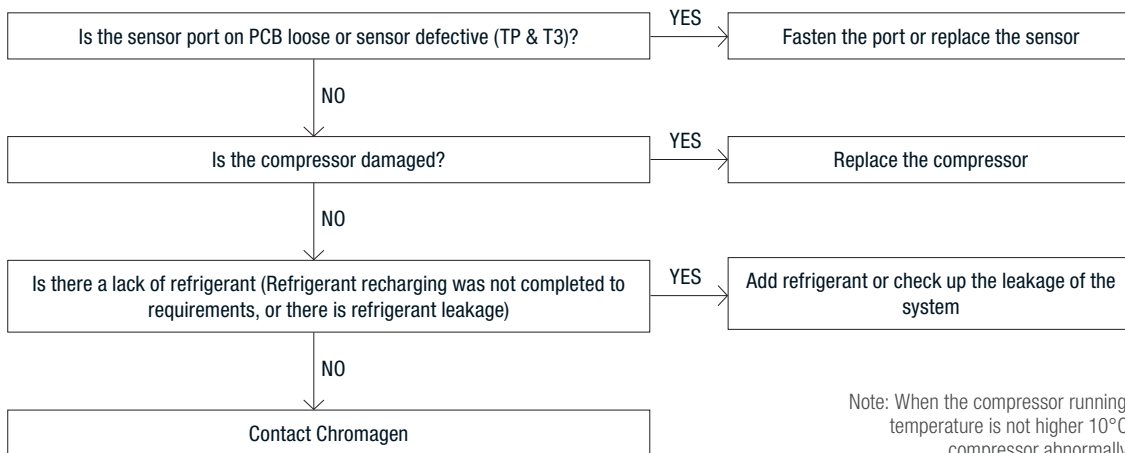


Note: When the discharge pressure of compressor is 2.76Mpa or higher, the protection switch will be triggered. If the discharge pressure is down to 2.07MPa, the protection switch will be recovered.

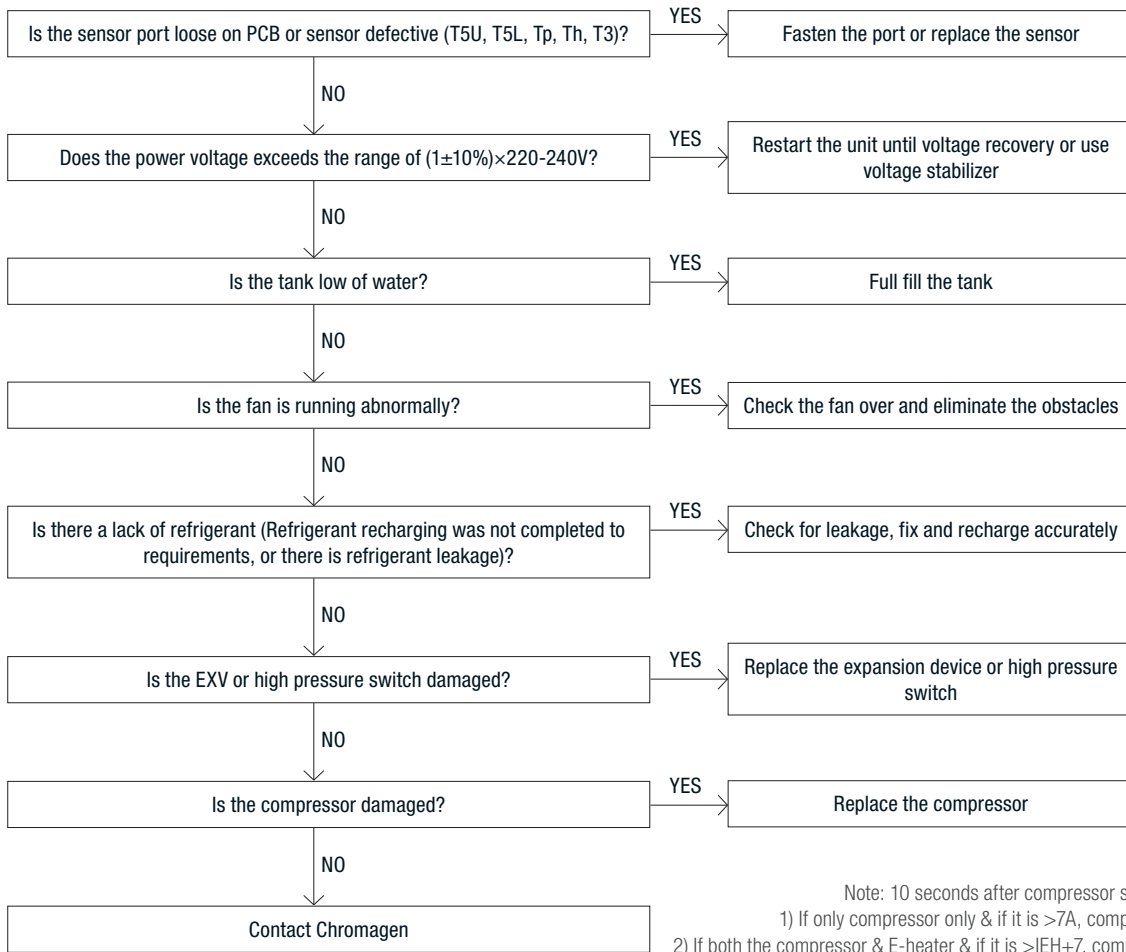
Error P2 | High discharge temperature protection



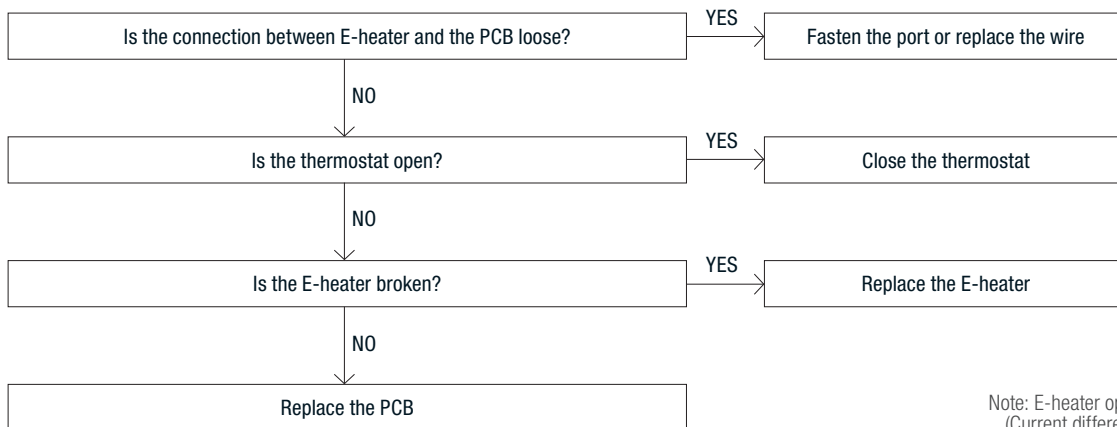
Error P3 | No current flow in compressor



Error P4 | Compressor overload protection



Error P8 (HP-170 Only) | E-Heater open circuit error



Error LA | Temperature Protection

When the ambient temp sensor (T4) reads a temp outside of heat pump running range (5-43°C), the heat pump will automatically stop. The unit will show 'LA' on the display until T4 is back within 5-43°C.

Note: Provided the surrounding environment can explain this error then the code is for protection only and no repair is necessary.